

# 36' DESIGNS



## Chapleau

elev b • 2206 sq. ft.

[fieldgatehomes.com](http://fieldgatehomes.com)



# 36' DESIGNS



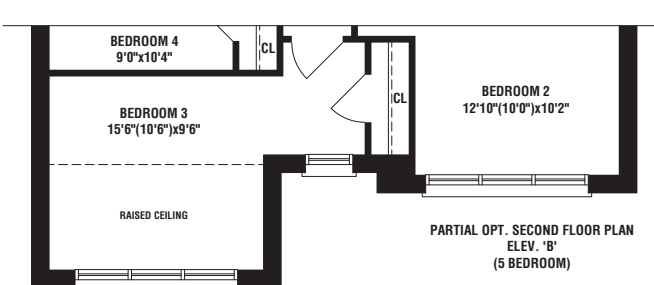
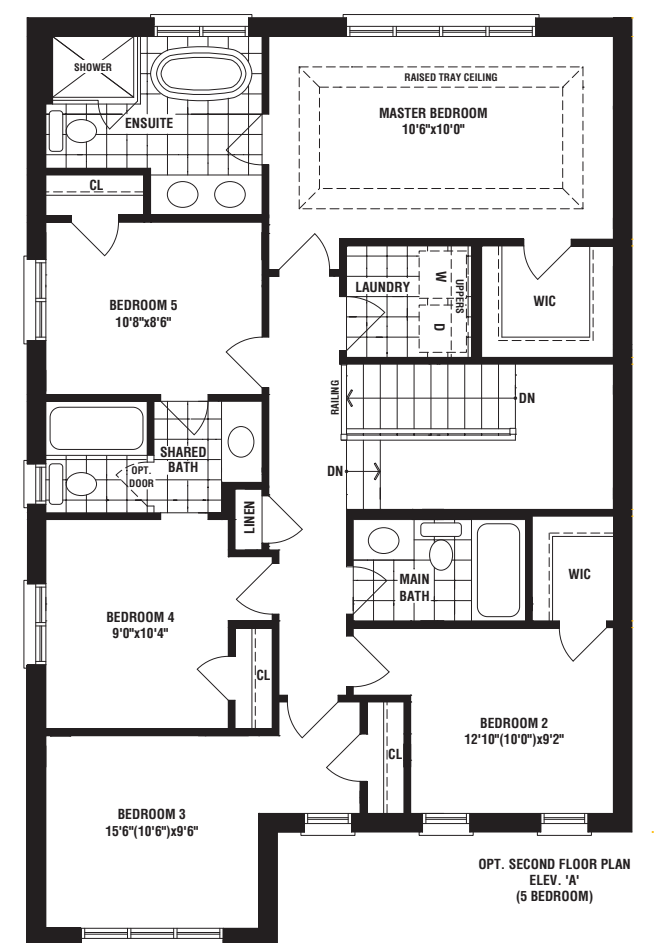
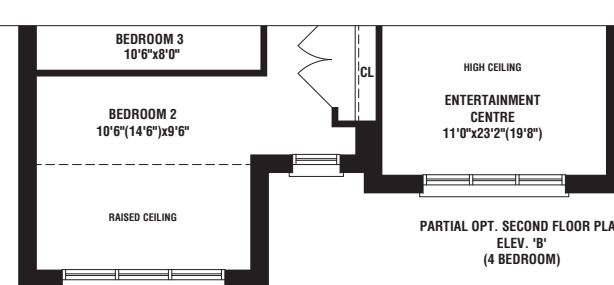
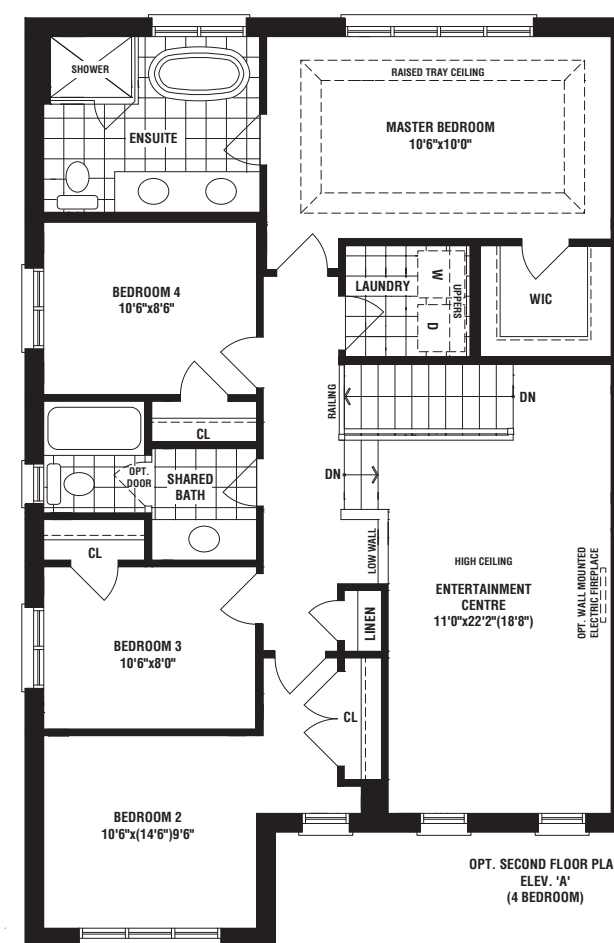
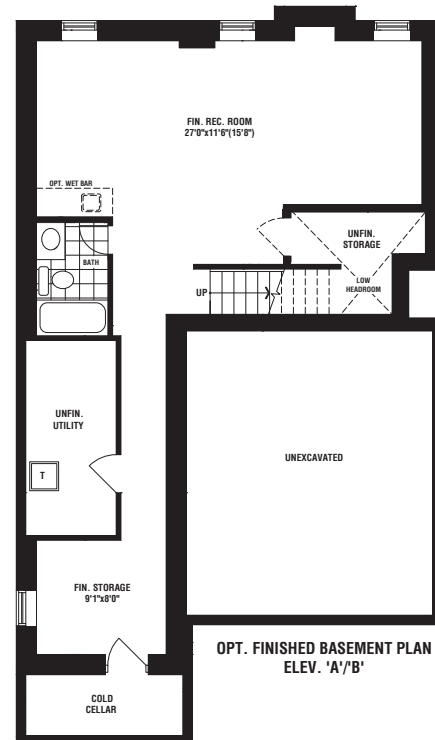
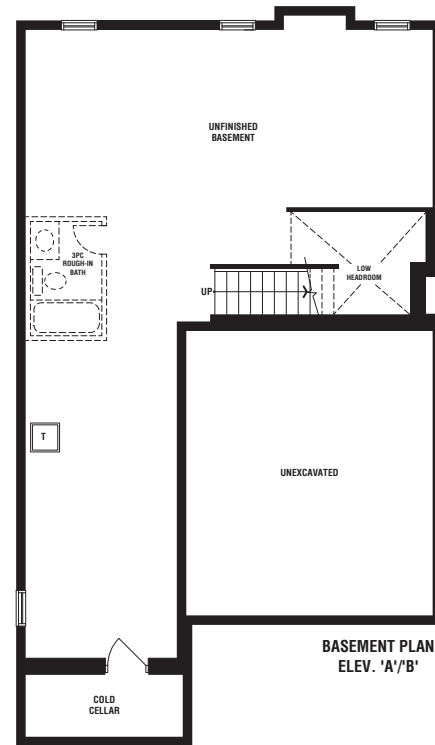
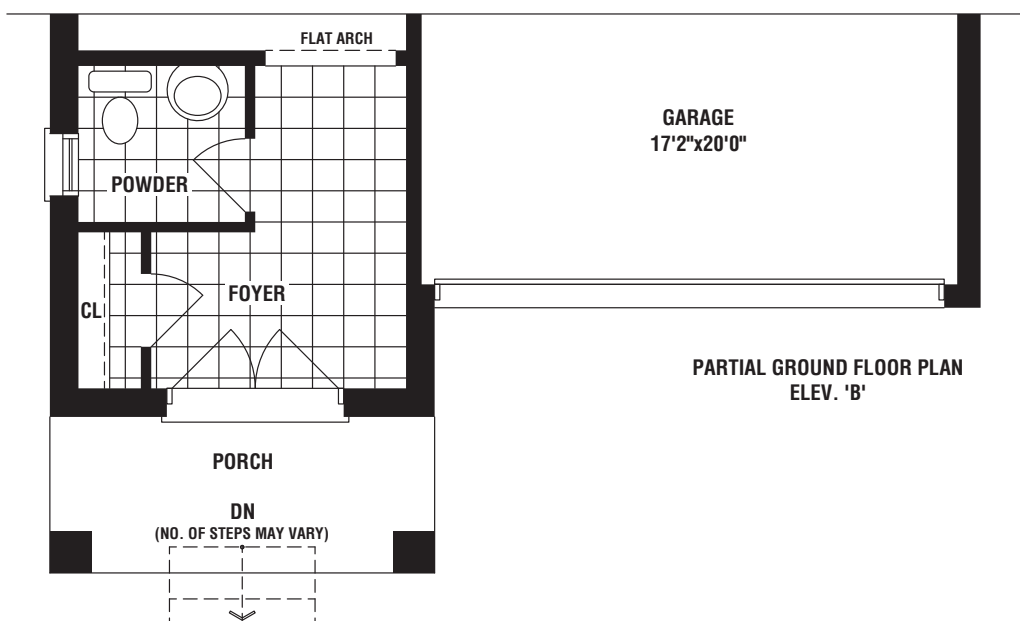
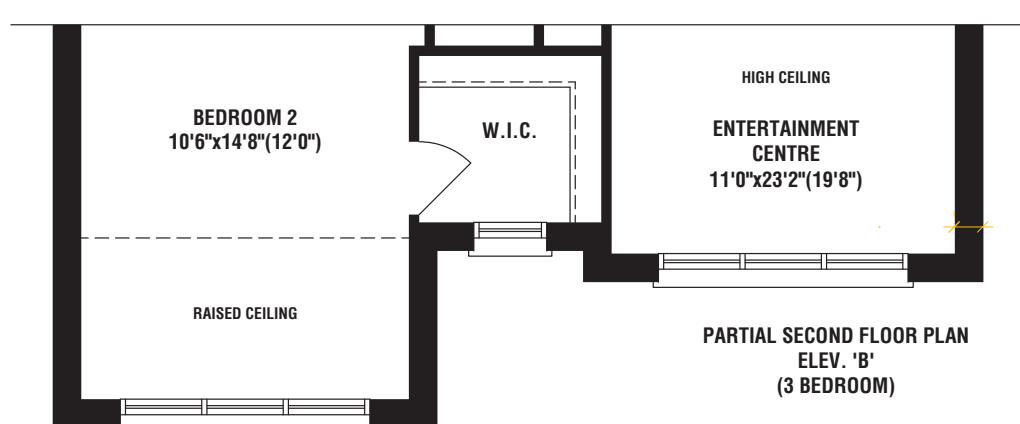
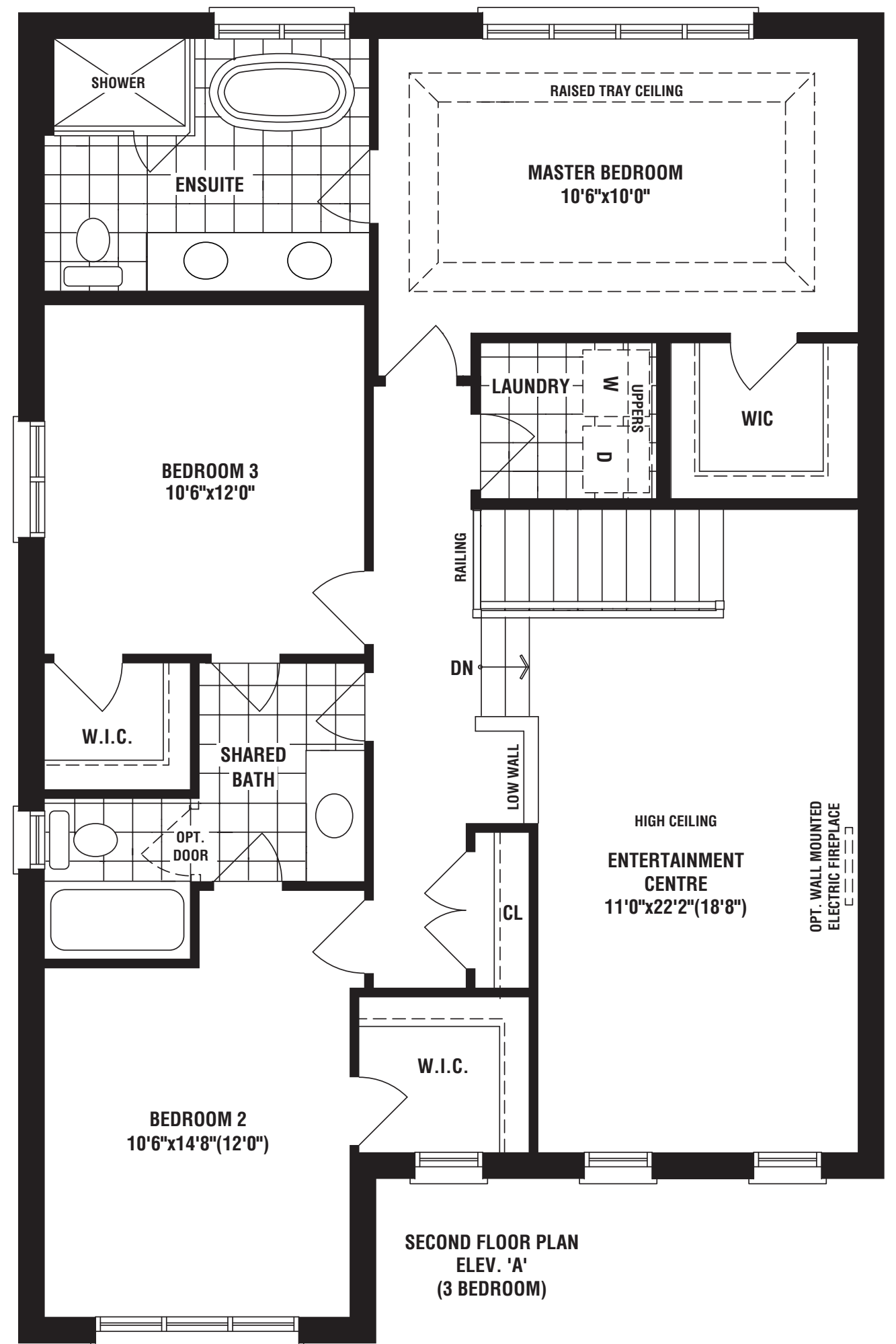
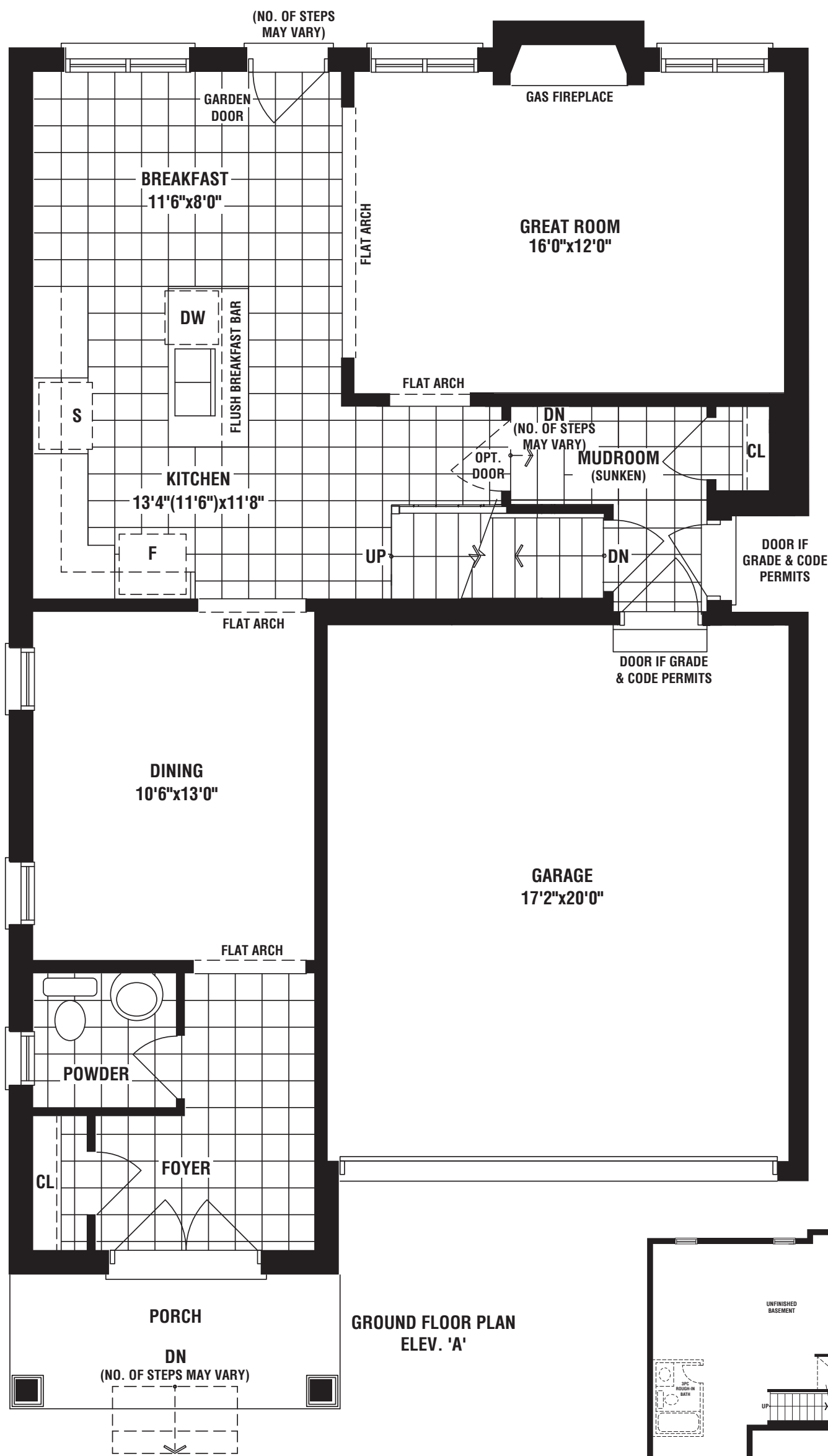
## Chapleau

elev a • 2193 sq. ft.

[fieldgatehomes.com](http://fieldgatehomes.com)







The floorplans and elevations shown, dimensions, specifications and architectural detailing are pre-construction plans and may be revised or improved as necessitated by architectural controls and the construction process. All dimensions are approximate. Actual usable floor space may vary from the stated area. House may be reversed and Purchaser agrees to accept same. Specifications subject to change without notice. Steps may vary at any exterior entrance. Illustrations are Artist's concept. Exterior railings on plans only as required by grade. E.O.E. 0C30-6 11/20