

36' DESIGNS



Rondeau

elev b • 1482 sq. ft.

fieldgatehomes.com



36' DESIGNS

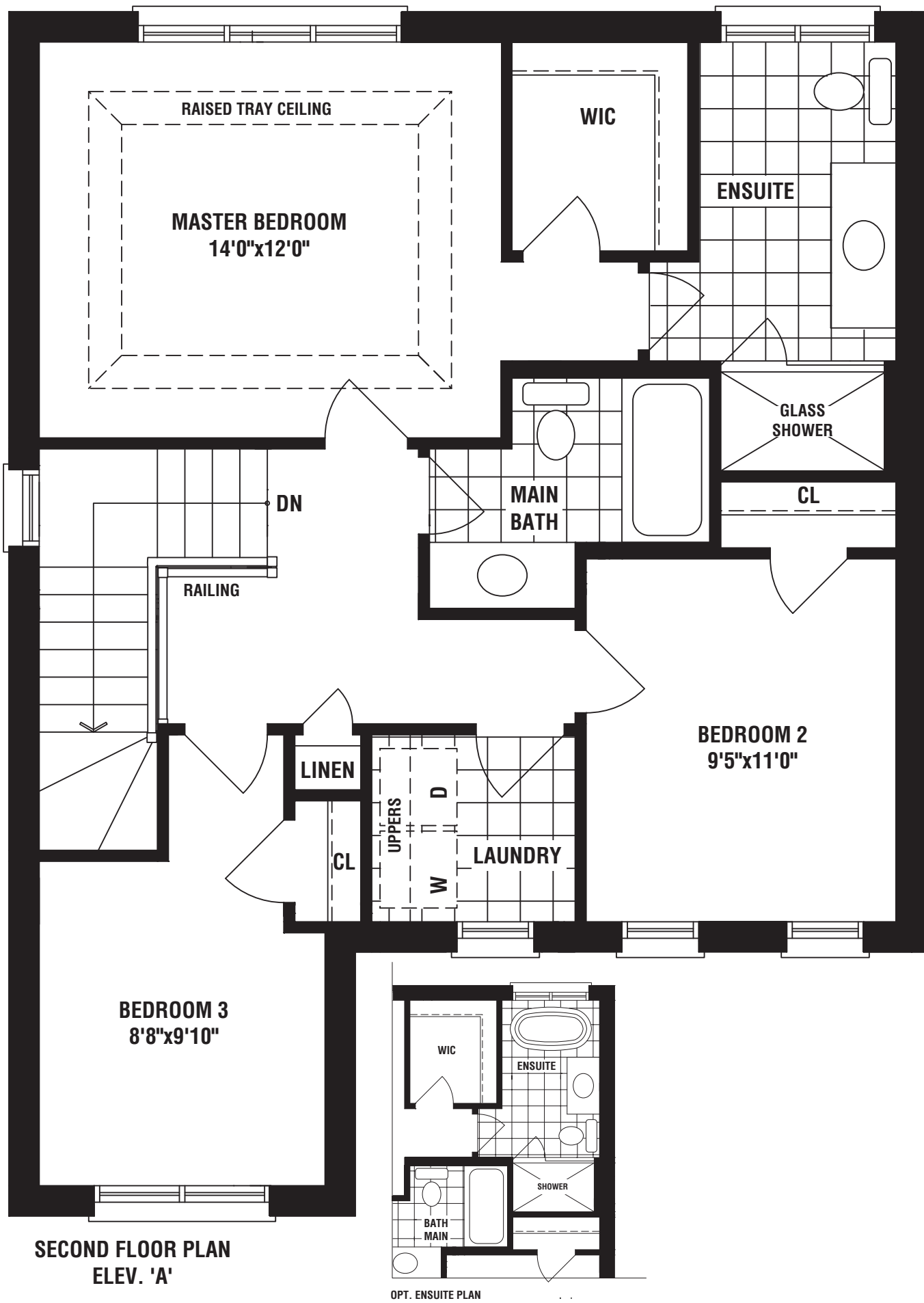


Rondeau

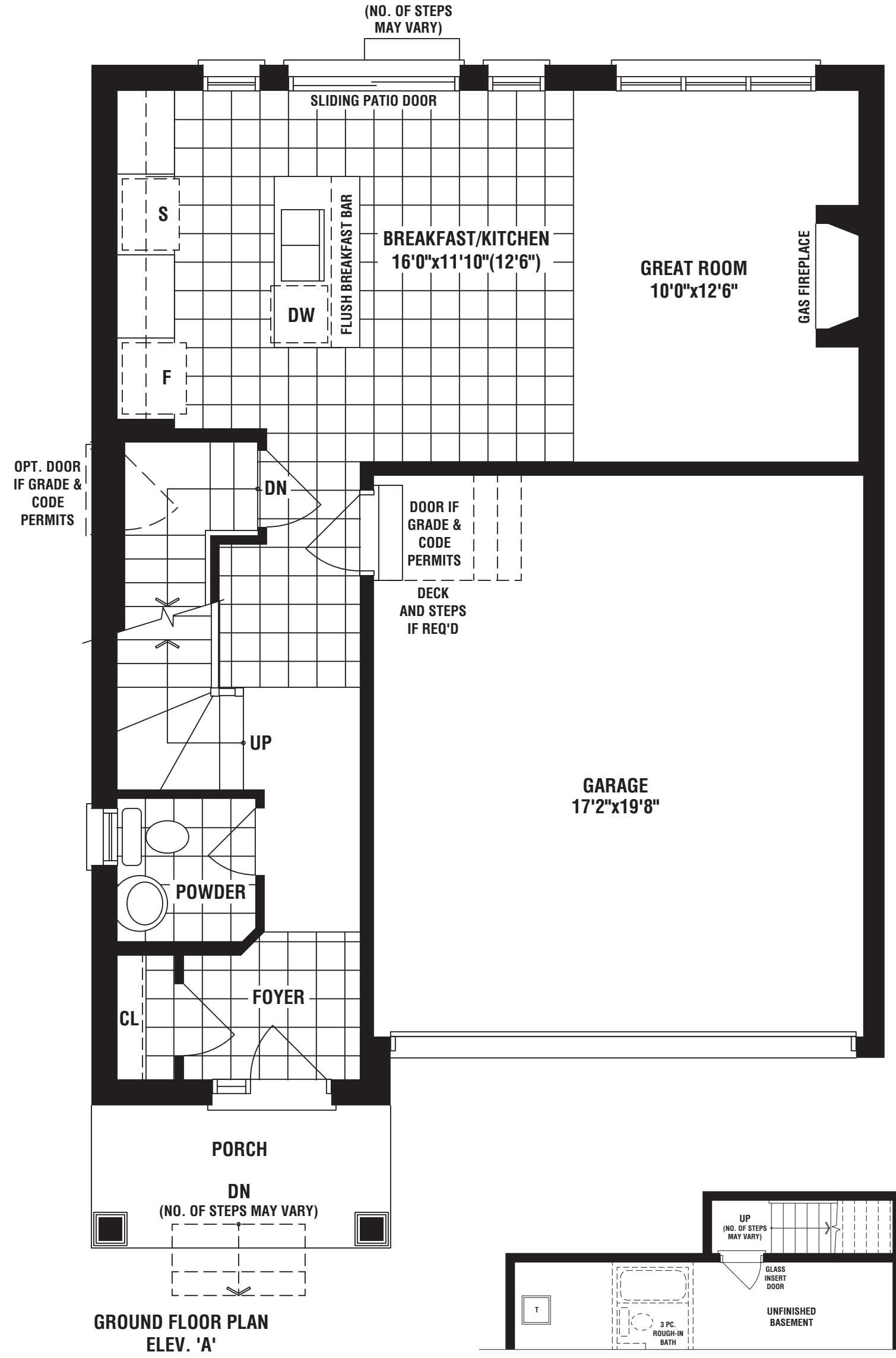
elev a • 1471 sq. ft.

fieldgatehomes.com

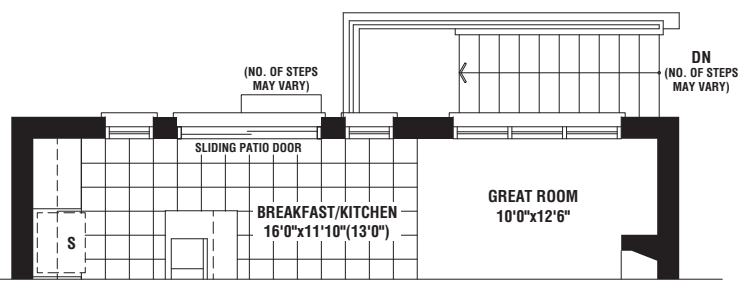




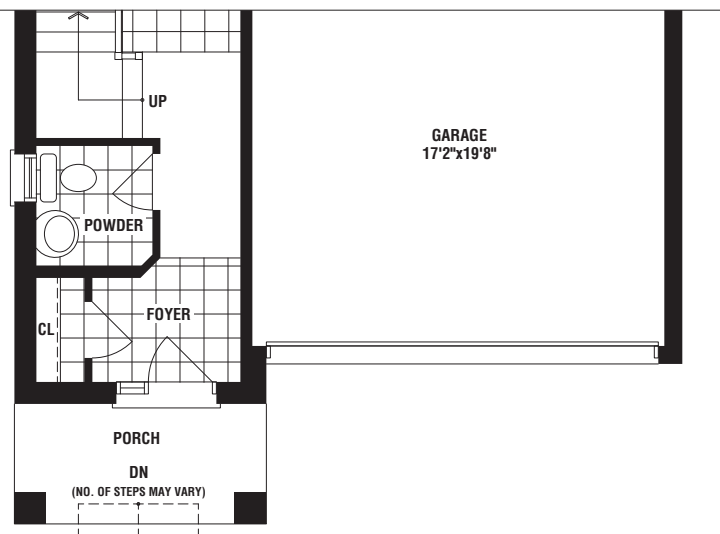
OPT. ENSUITE PLAN



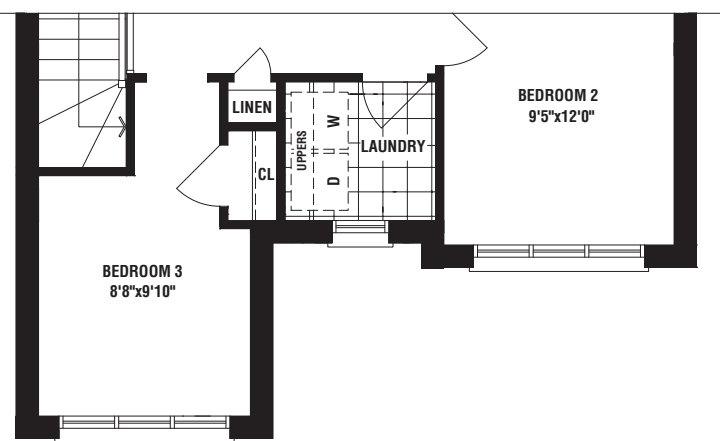
GROUND FLOOR PLAN
ELEV. 'A'



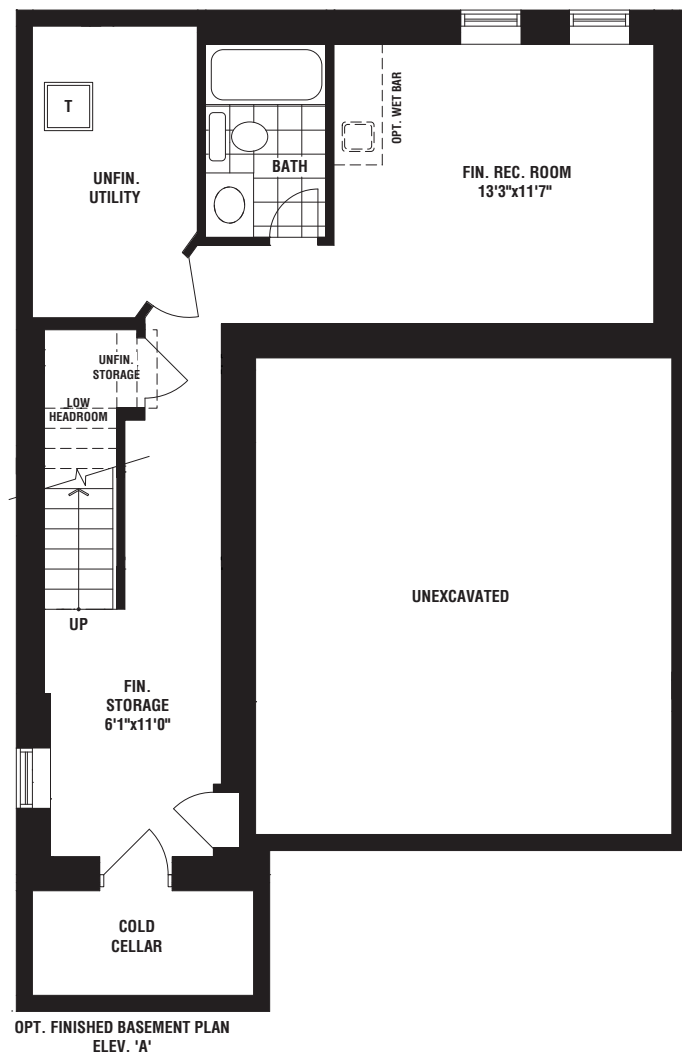
PARTIAL OPT. GROUND FLOOR PLAN
WALK UP CONDITION



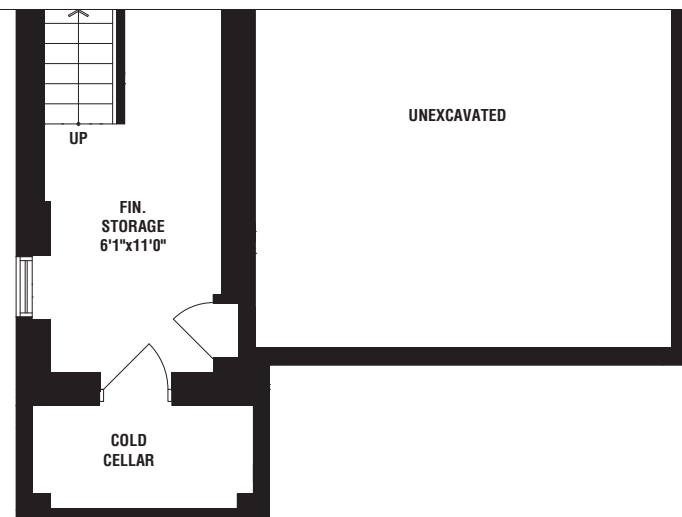
PARTIAL GROUND FLOOR PLAN
ELEV. 'B'



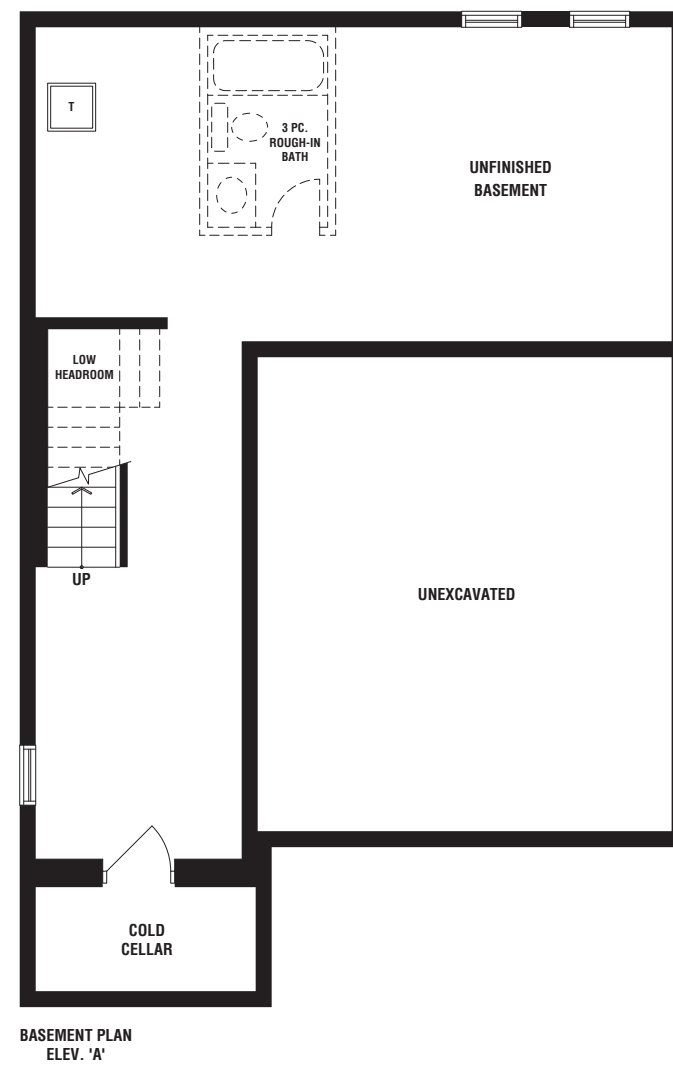
PARTIAL SECOND FLOOR PLAN
ELEV. 'B'



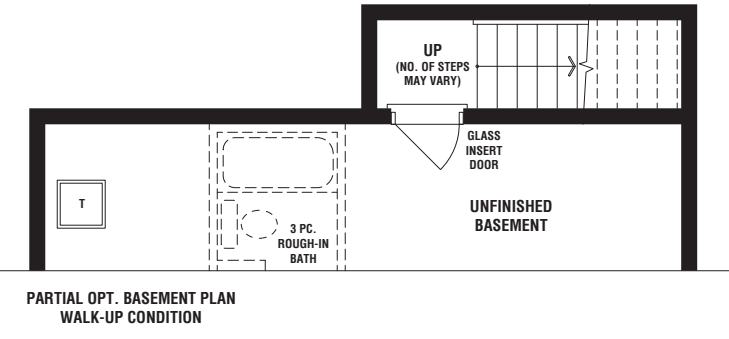
OPT. FINISHED BASEMENT PLAN
ELEV. 'A'



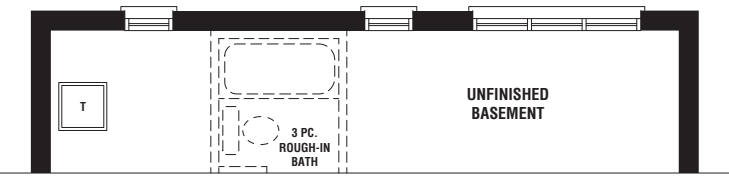
PARTIAL OPT. FINISHED BASEMENT PLAN
ELEV. 'B'



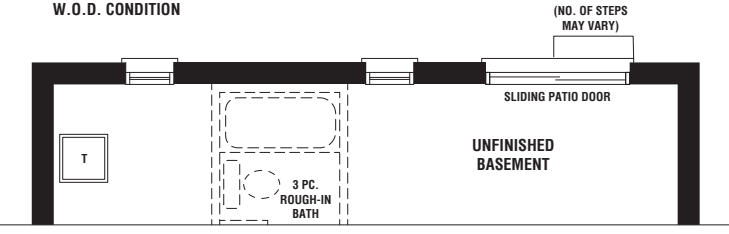
BASEMENT PLAN
ELEV. 'A'



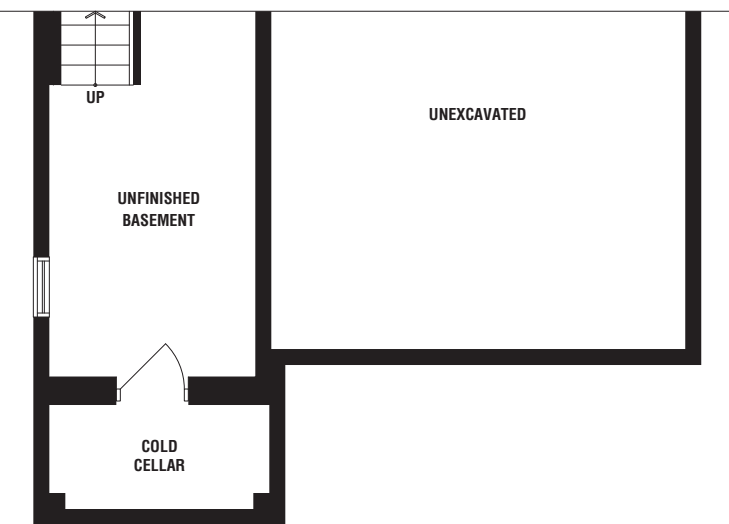
PARTIAL OPT. BASEMENT PLAN
WALK-UP CONDITION



PARTIAL BASEMENT PLAN
W.O.D. CONDITION



PARTIAL BASEMENT PLAN
W.O.B. CONDITION



PARTIAL BASEMENT PLAN
ELEV. 'B'

The floorplans and elevations shown, dimensions, specifications and architectural detailing are pre-construction plans and may be revised or improved as necessitated by architectural controls and the construction process. All dimensions are approximate. Actual usable floor space may vary from the stated area. House may be reversed and Purchaser agrees to accept same. Specifications subject to change without notice. Steps may vary at any exterior entrance. Illustrations are Artist's concept. Exterior railings on plans only as required by grade. E.O.E. 0C20-2 11/20