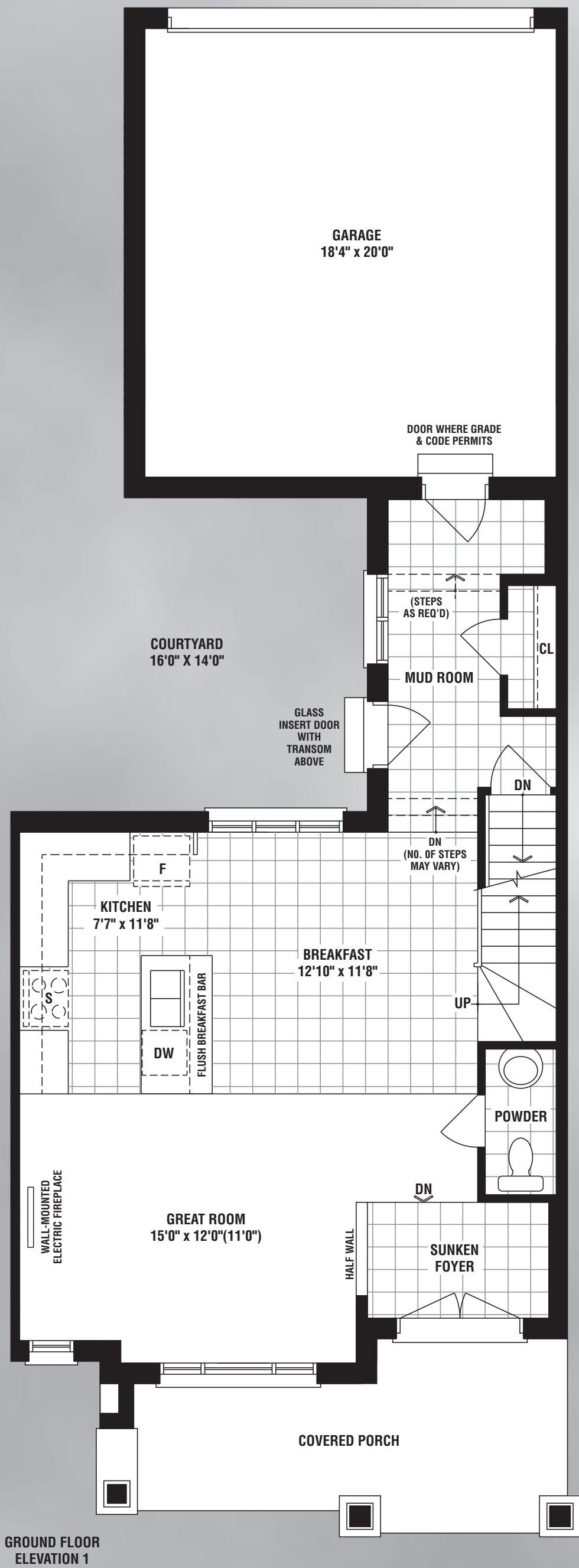
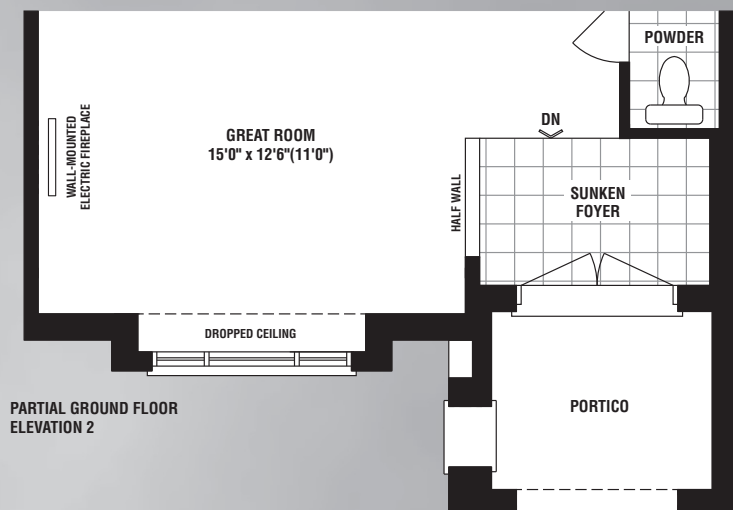




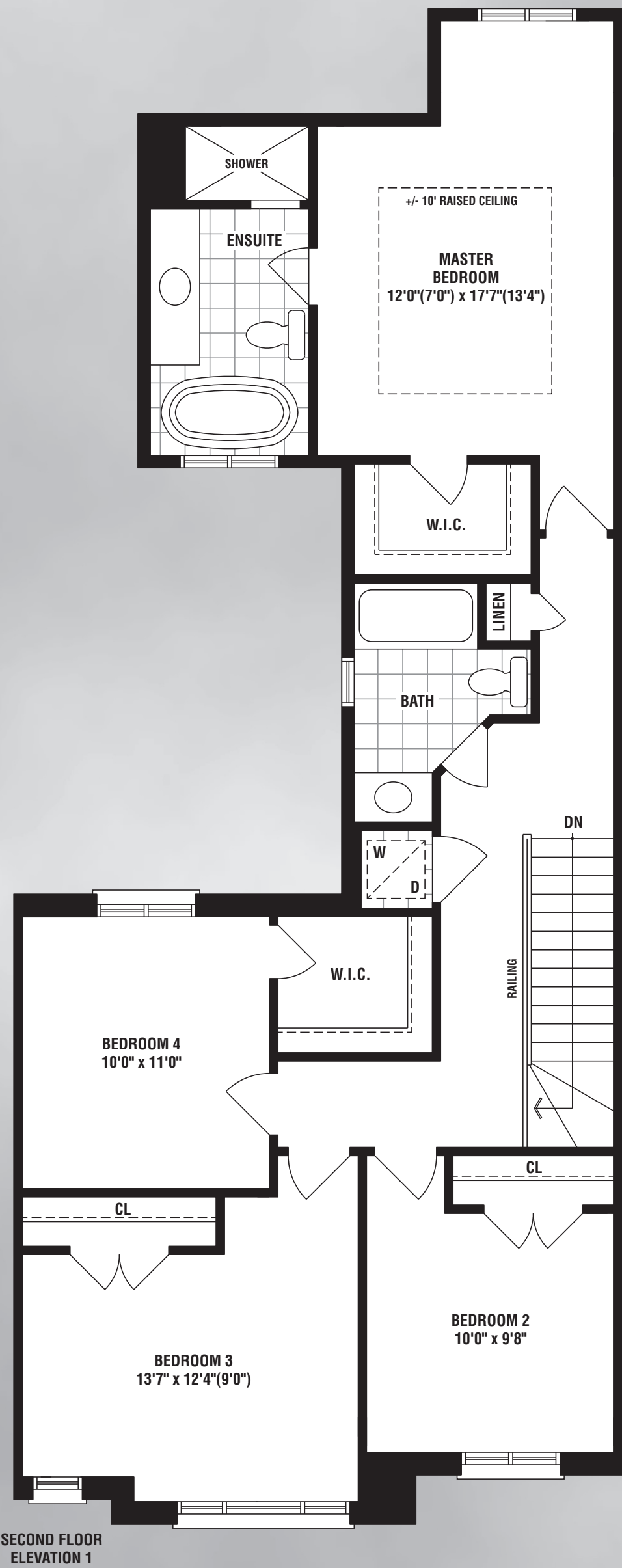
OVER 60 YEARS OF EXCELLENCE



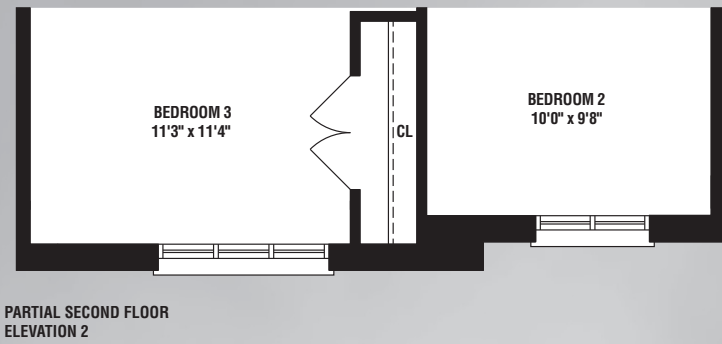
GROUND FLOOR
ELEVATION 1



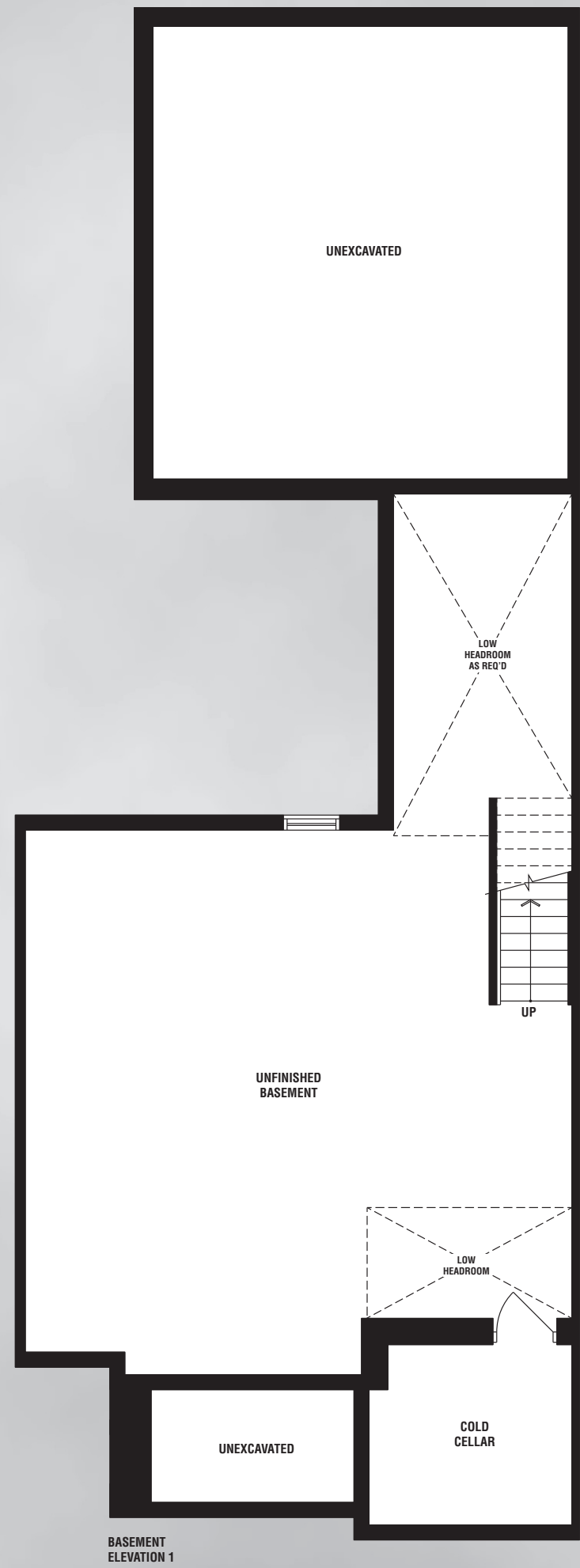
PARTIAL GROUND FLOOR
ELEVATION 2



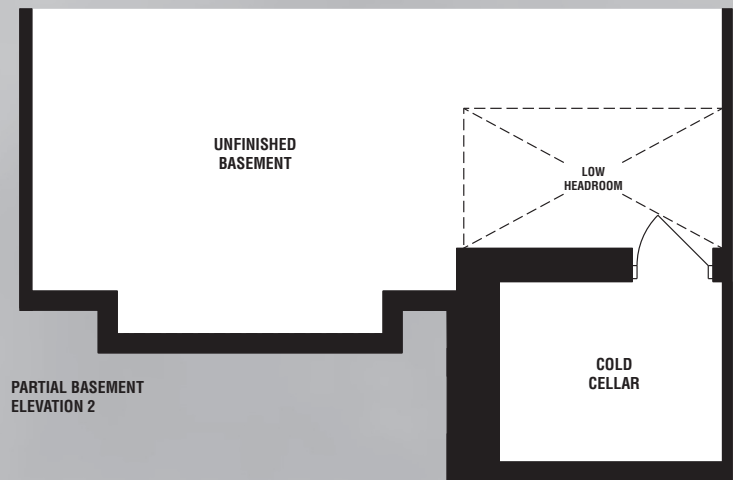
SECOND FLOOR
ELEVATION 1



PARTIAL SECOND FLOOR
ELEVATION 2



BASEMENT
ELEVATION 1



PARTIAL BASEMENT
ELEVATION 2

Redfinch
1877 / 1868 sq. ft.

Elev. 1

Elev. 2

1887 / 1878 sq. ft.

Elev. 1C (END)

Elev. 2C (END)

The floorplans and elevations shown, dimensions, specifications and architectural detailing are pre-construction plans and may be revised or improved as necessitated by architectural controls and the construction process. All dimensions are approximate. Actual usable floor space may vary from the stated area. House may be reversed and purchaser agrees to accept same. Specifications subject to change without notice. Steps may vary at any exterior entrance. Illustrations are Artist's concept. Exterior railings on plans only as required by grade. E. & O.E.

1868 Sq. Ft. Elev. 2
1878 Sq. Ft. Elev. 2C

OVER 60 YEARS OF EXCELLENCE



Redfinch Elev. 2 & 2C



OVER 60 YEARS OF EXCELLENCE

Redfinch Elev. 1 & 1C

1877 Sq. Ft. Elev. 1
1887 Sq. Ft. Elev. 1C